

Name: _____

Date: _____

Music Mid-Year Assessment - Orchestra

(Worth 50 points)

1. What Instrument do you play? _____
2. What materials do you need to play & take care of your instrument? (list at least 3)
 - a. _____
 - b. _____
 - c. _____
3. What clef do you use to read music for your instrument?
4. Please draw the clef for your instrument:

Music Theory: (please correctly name each musical symbol)

5.  _____

6. How many lines & spaces does a staff have? _____ lines _____ spaces

7.  _____ = _____ beats/counts

8.  _____ = _____ beats/counts

9.  _____ = _____ beats/counts

10.  _____ = _____ beats/counts

11.  _____ = _____ beats/counts

12.  _____ = _____ beats/counts

13.  _____ = _____ beats/counts


14.  _____ = _____ beats/counts

15.  _____ = _____ beats/counts

16. A rest means _____.


17. *p* stands for the Italian word _____ which means _____.

18. *f* stands for the Italian word _____ which means _____.

19.  is a _____ which means to _____.

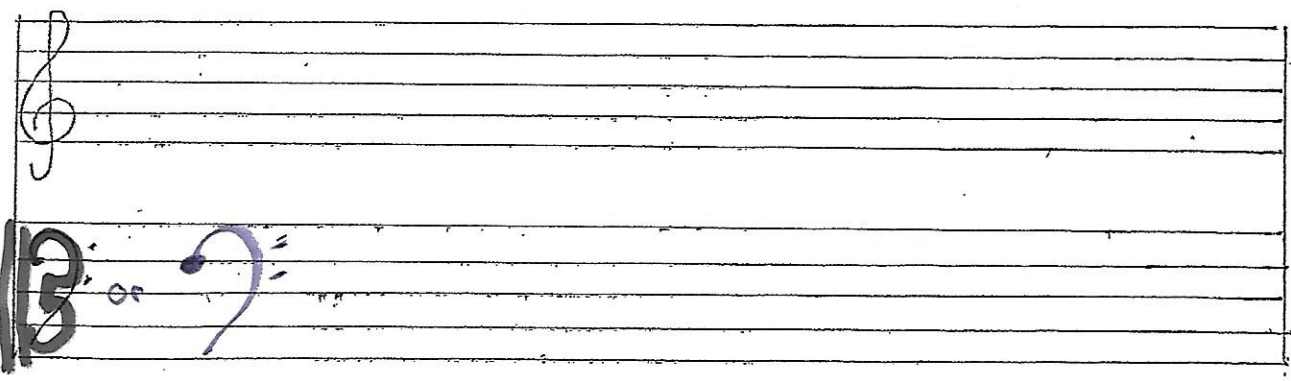
20. Label underneath if it is a line or space note:



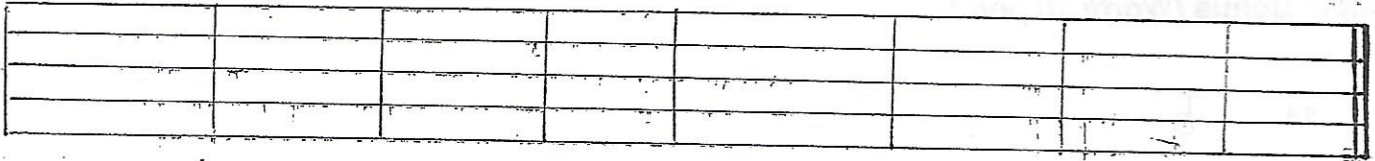
21.  means _____  means _____

22. Label the spaces and the lines in the staff of the clef you play. Worth 9 pts

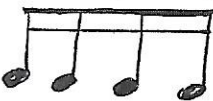
Write
letter
names



23. How many measures are below? _____ Draw a whole note in measure 6.



Bonus: (worth 20 points)

1.  _____

2. What is a composer? _____

3. Name 3 composers:

a.

b.

c.

4. What is Amy? _____ (not teacher)

Write our musical alphabet

5. ~~Arpeggio~~ means _____

6. ~~Pentatonic~~ ^{Pizz.} means _____

7. $\frac{4}{4}$ _____

8. Top number in $\frac{\#7}{10}$ means _____

9. Bottom number in $\frac{\#7}{10}$ means _____

10. Write in the counting of the rhythm below: *(May use Numbers or Ta, Ti, etc)*






a.

$\frac{4}{4}$ 

b.

$\frac{3}{4}$ 

Double Bonus (Worth 20 points):

- 11. b 
- 12. # 
- 13. ♯ 
- 14. ♮ 
- 15. ◡ 

16. Write the Solfège five note scale.

